



Recognised by the IOC - Member SportAccord, ARISF, IWGA and IMGA



## Appendix WDSF Dress Regulations

**These Regulations are part of the WDSF Competition Rules by reference in Rule E.10.**

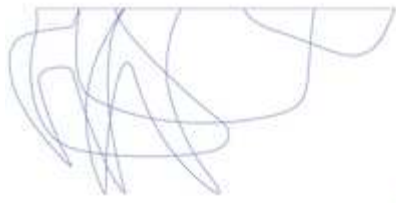
### Authority and Applicability

These Dress Regulations apply to all **competitions granted by** WDSF and according to the decision of the WDSF Annual General Meeting, form part of the **national** competition rules **for** of all WDSF Member bodies **except provided always** that WDSF Member bodies may impose additional dress restrictions at their own discretion for national non-WDSF-named events.

The WDSF Presidium retains the authority to impose specific additional or general Dress restrictions or otherwise amend or allow exemptions, for specific events.

### GENERAL

- 1. Female athletes may not wear pants, shorts, culottes, leotards or trousers and must wear a skirt or a dress. Skirts and dresses must create Characteristic shape for each discipline (ST and LA) (shape area). In Standard Dress the lady's or girl's dress must have a long skirt which at minimum covers both her knees; if the skirt is split it must not be split higher than the knee. In Latin Dress the lady's or girl's dress must have a skirt made of fabric, fringe, feathers and beads or any other suitable material, and can be split or open on the sides, provided always that the skirt must completely cover the panties in front and in the back when standing still.**
- 2. An athlete's costume must cover the intimate parts of that athlete's body ("the intimacy area").**
- 3. A lady's or girl's dress and makeup must be appropriate for her age and the level of competition which is being danced.**
- 4. In order to present a more modern and up-to-date image of DanceSport, a suit jacket with collared shirt and tie, or a vest with collared shirt and tie is recommended for the Junior II, Youth, Adult and Senior age groups.**
- 5. Athletes may not use religious symbols as decoration or decoration jewellery but may use religious symbols as part of their personal jewellery.**
- 6. The Chairman has full authority to require any athlete to remove an item of jewellery or dress at any time if in the Chairman's opinion that the item of jewellery or dress poses a potential danger to that athlete or to other competitors.**



Recognised by the IOC - Member SportAccord, ARISF, IWGA and IMGA



**7. An athlete may compete wearing a costume which is required in a lower category.**

**8. The Chairman may suspend from competition any athlete who fails to comply with these guidelines or fails to comply with the Chairman's directions at a competition, and may direct the Scrutineer not to record the marks given to such an athlete in any competition in which the athlete fails so to comply.**

### **Good Taste Rule**

Any use of material or colour or construction or other contrivance that gives the appearance of non compliance with these dress rules, even though there is no breach of the literal wording of these rules, will be a breach of these rules if so determined by the Chairman of Adjudicators.

### **SANCTIONS**

If a couple is not dressed in accordance with this Dress Regulation and receives a warning from the Chairman of adjudicators, they **must** comply with the regulation or face disqualification

**IMMEDIATELY BY THE CHAIRMAN of the WDSF Sports Director**, if present. The **Presidium** can impose additional sanctions including suspension from competitions for repeat offenders.

### **DEFINITIONS OF TERMS**

**No restriction (NR)** – there are no restrictions in this matter

**Not allowed (NA), Only allowed (OA),**

**Intimacy area (IA)** – body zones, which **must** be covered by non transparent materials or transparent materials lined with non transparent materials. If skin colour is used **in an athlete's costume**, it **must** be **SwD**.

### **Rules**

**For the Female partner:**

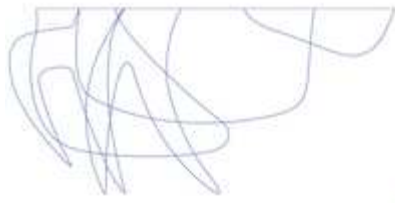
- tangas are **NA**.
- skin colours panties are **NA**.
- Breasts **must** be covered
- the distance between bra cups **must** be **less than 5 cm**.

**Shape area (SA)** – minimum area which **must** be covered. Transparent materials are allowed in these areas, any colour is allowed.

**Basic material** – creates shape of the dress

- with light effects (metallic, glitter, sequins, ...)
- without light effects

**Decoration** – anything fixed on the basic material, hair, skin:



Recognised by the IOC - Member SportAccord, ARISF, IWGA and IMGA

- with light effects (rhinestones, sequins, beads, pearls, ...)
- without light effects (feathers, flowers, bows, fringe, lace applications, ribbons, ...)

Tie clips, studs, cufflinks, buckles are not ~~thought of~~ **defined** as decorations.

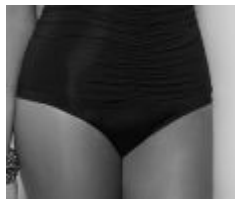
**Hip Line (HL)** – panties top line (~~how low~~ **height**)

= straight horizontal line, **the** top of **the cleft or** line between buttocks muscles (intergluteal line) **must not** be visible.

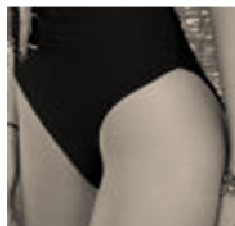
**Panty Line (PL)** – panties bottom line (~~how high~~ **height**)

- o back side – whole buttocks are covered
- o in the front – follows line between flexed leg and body

**The following illustration shows the minimum degree of coverage required by this Rule:**



**The following illustration is an example of a degree of exposure which is not permitted under this Rule:**



The distance between HL and PL on the side **must** be **more than 5 cm**

**Man's Top Opening Point (TOP)** – point, to which top or shirt can be opened

= centre of the belt buckle or centre of the trousers top line



Recognised by the IOC - Member SportAccord, ARISF, IWGA and IMGA



## Colours



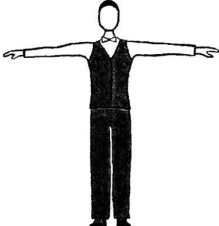
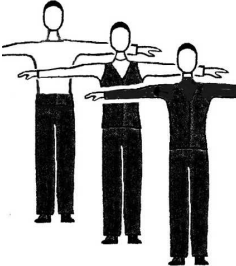
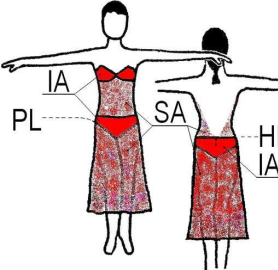
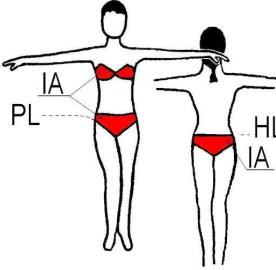
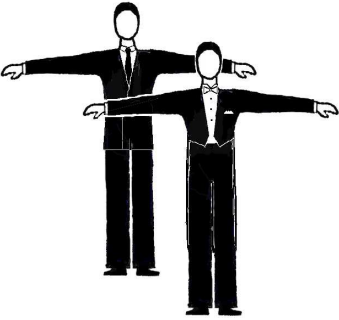
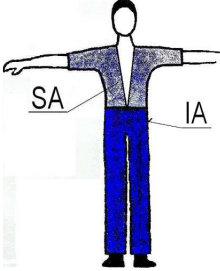
- **black only ( Bo )**
- **black (B)** – means black and midnight blue
- **white (W)**
- **skin colour (S)** – ~~equal to~~ the **same** colour **as** the dancer's skin during the competition (with tan)
- **skin colour with decoration (SwD)**
- **any colour (C)** – any colour **including** mixed colours
- **any colour except skin colour (CnS)**
- **one colour except skin colour (C1nS)**

**Long Sleeves/ed (LS)** – length to the wrist, rolled up sleeves is NA

**Make-up** – includes face make-up, artificial tan, artificial nails, and artificial eye lashes.

**Decoration jewellery** – jewellery designed to be a part of a dance dress

**1. DANCE DRESS – Only Allowed**

Partner Disc.	Male		Female	
	ST	LA	ST	LA
Juvenile	<p><b>W</b> LS shirt <b>Bo</b> trousers <b>Bo</b> tie/bow tie</p>  <p>cuts and details – see appendix I</p>		<p><b>W</b> blouse leotard or T shirt <b>Bo</b> skirt</p> <p>simple <b>C1nS</b> dress + panties</p> <p><b>C1nS</b> leotard with same colour skirt attached</p>  <p>cuts and details – see appendix II</p>	
Junior I	<p><b>W</b> LS shirt or <b>W/Bo</b> LS polo neck top <b>Bo</b> vest optional <b>Bo</b> trousers <b>W</b> bow tie to be worn with dress shirt <b>B</b> tie to be worn with plain shirt</p> 	<p><b>C</b> shirt/top (tucked in or outside) <b>TOP-breastbone</b> <b>CnS</b> trousers</p> 	<p>Competition dress JI – <b>CnS</b> others – <b>C</b></p> 	<p>Competition dress JI – <b>CnS</b> others – <b>C</b></p> 
Junior II Youth Adult Senior	<p><b>B</b> Jacket suit (<b>B</b> trousers <b>B</b> jacket <b>W</b> shirt <b>B</b> tie Or <b>W</b> tail shirt <b>W</b> bow tie)</p> <p><b>B</b> Tail suit (<b>B</b> trousers <b>B</b> tails <b>W</b> waistcoat <b>W</b> tail shirt <b>W</b> bow tie)</p> 	<p><b>C</b> Shirt/Top <b>CnS</b> trousers</p> 	<p>two piece dresses <b>NA</b></p>	<p>Top and trunk <b>must not</b> be only bikini</p>

## 2. DECORATIONS, LIGHT EFFECTS

Partner Disc.	Male		Female	
	ST	LA	ST	LA
Juv	Any decorations – <b>NA</b> Basic materials with light effects - <b>NA</b>		Any decorations – <b>NA</b> Basic materials with light effects - <b>NA</b>	
Jun I			Decoration with light effects – <b>NA</b> (Decoration without light effects is allowed). Basic materials with light effects – <b>NA</b>	
Jun II – Sen				

## 3. SHOES, SOCKS, TIGHTS

Partner Disc.	Male		Female	
	ST	LA	ST	LA
Juv	Heel: <b>may</b> be max 2,5 cm B socks <b>must</b> be <b>worn</b>		Heel: block, <b>may</b> be max 3,5cm C short socks are allowed Tights: skin colour - <b>OA</b> , mesh - <b>NA</b>	
Jun I	Shoes: <b>NR</b>		Heel: <b>may</b> be max 5 cm short socks are allowed tights: mesh - <b>NA</b>	
Jun II – Sen			<b>NR</b>	

## 4. HAIRSTYLES

Partner Disc.	Male		Female	
	ST	LA	ST	LA
Juv	If the hair is long it <b>must</b> be worn in a pony tail		Decoration and coloured hairspray - <b>NA</b>	
Jun I			Decoration with light effects and coloured hairspray – <b>NA</b> (Decoration without light effects are allowed)	
Jun II <span style="border: 1px solid black; padding: 0 2px;">Sen</span>			<b>NR</b>	

5. MAKE-UP					
Partner Disc.	Male			Female	
	ST	LA	ST	LA	LA
Juv, Jun I	Make-up - <b>NA</b>				
Jun II – Sen	<b>NR</b>				

6. DECORATION JEWELLERY (not personally jewellery)					
Partner Disc.	Male			Female	
	ST	LA	ST	LA	LA
Juv	Decoration jewellery - <b>NA</b>				
<b>Jun I</b>	Decoration jewellery with light effects – <b>NA</b> (Decoration jewellery without light effects are allowed)				
Jun II – Sen	<b>NR</b>				

**Appendix 1: Juvenile Male Dress**

Top

- plain long sleeved shirt or polo neck top
- shiny or patterned materials - NA
- shirt wing collar - NA
- rolled up sleeves -NA
- must be tucked in

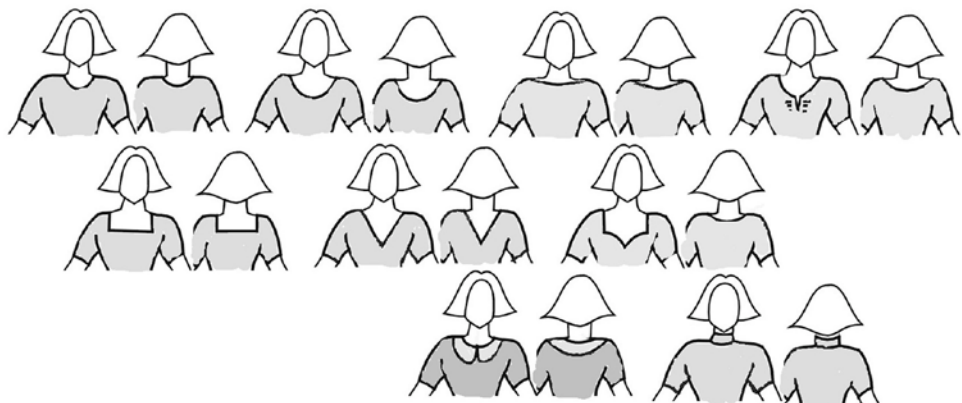


Trousers

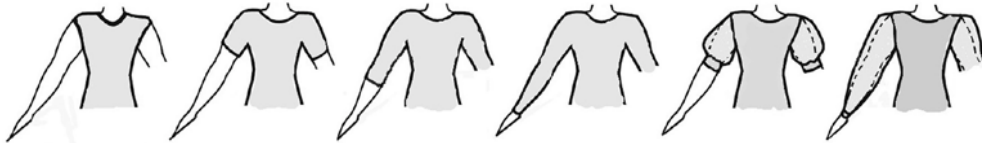
- shiny or patterned materials - NA
- side satin stripe allowed

**Appendix 2: Juvenile Female Dress**

**A. Necklines – allowed cuts, others - NA:**

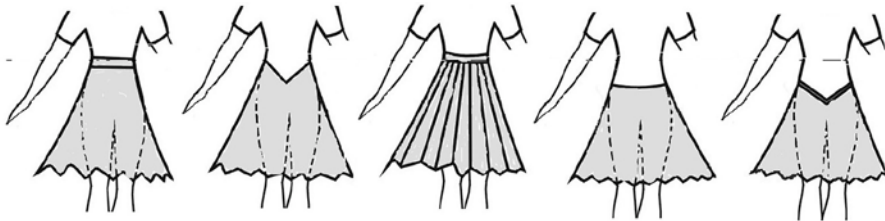


**B. Sleeves – allowed cuts, others - NA:**



**C. Skirts:**

- plain or pleated, made of minimum 1 to maximum 3 half circles - **OA**, one simple circular underskirt allowed, bigger underskirt - **NA**.
- frills on the skirt or the underskirt, boning, soft boning or fishing line used in the hem of the skirt – **NA**
- length **must not** be more than 10 cm above the knee and not longer than just below the **kneecap**.
- allowed cuts, others - **NA**:



**Examples:**

